

MEDIA RELEASE

BAU 003M

building the unfinished:

Victorian Pride Centre, St. Kilda, Melbourne, Australia

建造完善中：

澳大利亚，墨尔本，圣基尔达，维多利亚骄傲中心

BAU 003M

building the unfinished:

Victorian Pride Centre, St. Kilda, Melbourne, Australia

建造完善中:

澳大利亚, 墨尔本, 圣基尔达, 维多利亚骄傲中心

Project Data

项目情况:

Grant Amon Architects (GAA) and Brearley Architects and Urbanists (BAU)

Grant Amon 建筑师事务所 (GAA) 和彼爱游建筑城市设计 (BAU)

Project Status: Competition 1st Prize, Documentation in progress

项目情况: 竞赛第一名, 正在报建阶段

Location: St Kilda, Melbourne, Australia

地点: 澳大利亚, 墨尔本, 圣基尔达

Year: 2018

年份: 2018

Client: Victorian Pride Centre

客户: 维多利亚骄傲中心

Typology: Public Building, Culture, Office and Commercial

类型: 公共建筑、文化、办公和商业

Program: Shared work spaces, theatre, library, medical clinics, office, meeting rooms, commercial tenancies, roof top terrace, garden.

功能项目: 共享工作空间、剧院、图书馆、医疗诊所、办公室、会议室、商业租赁、屋顶露台、花园。

Grant Amon Architects Project Team Competition:

Grant Amon, Stephen Herbst, Estelle Peter, Karen Macmull

Grant Amon 建筑师事务所竞标团队: Grant Amon, Stephen Herbst, Estelle Peter, Karen Macmull

BAU Project Team Competition: James Brearley, Steve Whitford, Jens Eberhardt (Partner in Charge), Fonarri Chen, Charles Hu

BAU竞标团队: James Brearley, Steve Whitford, Jens Eberhardt (合伙人), Fonarri Chen, Charles Hu

Credits

Credits

3D Visualization: BAU

3D 渲染: BAU

Diagrams: BAU

图解: BAU

Model Photography: BAU

模型拍摄: BAU

Project Description

competition

Grant Amon Architects (GAA) and Brearley Architects and Urbanists (BAU) have won the design competition for the Victorian Pride Centre in Fitzroy Street St. Kilda, Melbourne. From an initial field of 18 entries, the scheme was included in a shortlist of four for the second stage of the competition. The jury selected the winning design from these second-stage submissions.

The Victorian Pride Centre will bring together Victoria's LGBTQI community by accommodating a number of resident community organization groups. The building will be a place for work, collaboration and exchange for the LGBTQI specifically, and the Australian community in general. The building houses offices and work spaces for the resident organization groups and will include a communal ground floor of shared workspaces, hot-desking, a theatre, and a library. It will also include a roof top garden function space and an indigenous garden.

GAA and BAU conceived the building as a series of conceptual tubes that create a robust armature – a 3D infrastructure. Extracted from this armature is a series of urban design initiatives and flexible interior planning requirements that generate a surprising and accommodating series of spaces and forms responsive to the various organizations programs. The conceptual tubes fully integrate landscape, urban design, architecture and interior design, into one clear, strong, iconic building.

introduction

be proud

This is an important project, not only for the LGBTQI community but also for Australian society in general. Given the recent positive outcome from the marriage equality postal vote, this is a building with a calling to become a national landmark. This building signifies important social progress, like the Victorian Trades Hall Council Building, which has been the site for same sex marriage celebrations in Melbourne.

becoming, complexity, and the sublime

We have sought an architecture of inclusion – an architecture of and, and, and. ...and meaningful form and space full of potential and order informed from the top down and the bottom up and a robust aesthetic and rationally pragmatic and cost effective and symbolically informed and poetic and rigorously articulated and flexible and surprising and equitable and free and trans-cultural and ...

design response

a good neighbour

The building: accommodates urban design setbacks and urban character requirements in Fitzroy Street; addresses solar access and perceived scale issues for residences at the rear in Jackson Street; manipulates the development envelope to save the existing trees in the residential area of Jackson Street; and, is shaped to ensure light and outlook from the floors overlooking any future development on the adjacent corner site.

robust armature

A raw, robust armature of conceptual tubes has been created to integrate landscape, urban design, architecture and interior design.

The extraction of urban issues and the extraction or addition of the specifics of the VPC brief generate change, encourage difference, diversity and inclusion – resulting in surprising and emergent outcomes.

connectivity = urbanity

The edges of Fitzroy Street and the commercial part of Jackson Street contain commercial active edges, encouraging pedestrian activity and providing eyes on the street.

The spaces between the programs are considered as important as the programmed spaces of the building. Circulation from the entry to the central VPC ellipsoid atrium is an exhibition-gallery; and the VPC ellipsoid atrium grand stair ensures the atrium is a great place to be, not just a space to pass through.

Consultations with local indigenous representatives has ensured indigenous cultural influences will range from small-scale details cast in concrete elements, to acts of naming; from indigenous garden to the ground floor taking on the significance of country.

building the unfinished: **Victorian Pride Centre, St. Kilda, Melbourne, Australia**

建造完善中：
澳大利亚，墨尔本，圣基尔达，维多利亚骄傲中心

learning from St. Kilda

Fitzroy Street is one of Melbourne's grand promenades with a broad pavement and views toward the bay. Several buildings have built porticos and balconies with colonnades approaching the road edge; most notably, the Seaview Hotel and Ballroom at the George Hotel and the Prince of Wales Hotel, a home to the LGBTQI community since the 1970s. Leo's Spaghetti Bar, with its giant pop façade spelling LEO, reminds us Fitzroy Street is a place of the night.

St Kilda's spirit of place comes largely from its connections to the beach, the bay, and its history as an entertainment destination. St. Kilda's architecture and landscape has responded to this unique place with exotic exuberance and romantic escapism, most notably with Moorish influences – playful and seductive, with vaults, arches, domes, cupolas, and curvilinear forms.

Conceived as a semi-public building, this landmark sits proudly within the Fitzroy Street commercial strip. A double height colonnade with a terrace over the footpath provides the VPC with a vantage point to view the street's unique daily activity and events.

The VPC includes and then abstracts these St. Kilda traditions. This abstraction enables further interpretation – from the surreal follies of Luna Park to the rolling waves of St. Kilda beach, from Inga King's Forward Surge to the nooks of Catani's foreshore rockeries, from the pragmatics of the Esplanade Vaults to the iconic Catani arched bridge.

spatial clarity

The spatial arrangements in the building are clear and legible: circulation radiates from the VPC ellipsoid atrium; each floor is a clear collection of related programs, visually and spatially linked via the ellipsoid atrium; structure and non-structural fabric is clearly articulated, further explaining how the spaces are constructed and what is permanent and what is easily changed; and finally a colour scheme that clarifies the

different levels in the building and a users position within each level has been developed.

community

The building has a strong identity, clearly different to the commercial architecture of Fitzroy Street, but it is also respectful of its context. It reaches out to Fitzroy Street and blurs the line between the interior and St Kilda's street life, but also provides a secure place for the LGBTQI community. The Galleria, the VPC ellipsoid atrium, the Forum, the theatre-cinema, and roof top facilities are unique spaces for the LGBTQI community and the community in general to engage.

cost effective

To ensure financial viability, the project provides flexible rentable commercial space. Shop Front commercial tenancies face Fitzroy and Jackson Streets. The rooftop includes retractable fabric vaults, a bar-servery, and amenities for large events. A preparation kitchen is provided on level four. The theatre-cinema includes a bar-servery to enable a private operator to cater for both private and VPC events.

catalyst

Architecture alone cannot ensure certain activities happen, however, architecture can definitely stop activities from happening. This design of the VPC uses the above strategies to ensure this building is a stimulus not a barrier.

embracing difference

It is hoped this building will become a nationally recognised Melbourne icon, celebrating the LGBTQI community's achievements and Australian culture's progress.

Welcome to the VPC.

竞标

Grant Amon 建筑师事务所 (GAA) 和彼爱游建筑城市设计 (BAU) 共同赢得了墨尔本圣基尔达Fitzroy街的维多利亚骄傲中心设计竞赛。该方案在比赛的第二阶段从最初的18家竞标机构入围四强。评委团从第二阶段的提交中选出获胜的设计。

维多利亚骄傲中心将通过容纳大量当地社区组织汇集维多利亚的LGBTQI社会团体。该建筑将成为一个特别为LGBTQI提供合作和交流，同时供一般澳大利亚社会团体工作的场所。该建筑容纳了给常驻组织团体的办公室和工作空间，并将包括一个公用的一楼共享工作空间、轮用办公桌、一个剧院和一个图书馆。它还将包括一个屋顶花园功能空间和一个原生花园。

GAA和BAU将这座建筑物构想成一系列概念性的管道，这些管道构成了一个稳固的加强骨架——一个3D基础结构。从这个骨架中提取的是一系列城市设计举措和灵活的室内规划要求，为响应各种组织方案生成一系列出乎意料的、通融的空间和形式。概念管道将景观、城市设计、建筑和室内设计充分融合在一起，形成了一个清晰、有力、标志性的建筑。

介绍

感到骄傲

这是一个重要的项目，不仅对于LGBTQI团体，对整个澳大利亚社会也是如此。鉴于近日婚姻平权投票的正面结果，这是一个有成为国家地标使命的建筑。这座建筑标志着重要的社会进步，如同已成为墨尔本同性婚庆场所的维多利亚贸易大厅议会大厦一样。

不断完善、复杂且雄伟壮观

我们寻求一种包容的建筑——一种一应俱全的建筑。它具备有意义的形式、充满可能性的空间、自上而下和自下而上的秩序、刚健的美感、合理的务实主义、高效的成本；它富有象征性、诗意、严谨的表达、灵活性、出乎意

料、公平、自由、跨文化，等等。

设计响应

一个好邻居

该建筑：在Fitzroy街适应城区设计障碍和城区特点需求；处理Jackson街后方住宅的太阳能获取问题和感官规模问题；控制开发范围以保存Jackson街住宅区现有的树木；并且它的形状确保地面的光和景能俯视所有相邻的拐角处未来的发展。

稳固的骨架

我们创建了一个原始的、稳固的概念管骨架，以整合景观、城市设计、建筑和室内设计。

对城区问题的提取和对维多利亚骄傲中心简报细节的提取或添加产生了改变，鼓励差异、多样性和包容性——从而产生出乎意料和不断演变的结果。

连通性=都市性

Fitzroy街的外沿和Jackson街的商业区包含商业活动外沿，促进步行并且增加了街上的视线。

我们认为功能之间的空间与建筑物的功能空间同等重要。从入口到维多利亚骄傲中心中央椭圆中庭的循环是一个展览画廊；而维多利亚骄傲中心椭圆中庭的盛大楼梯确保中庭是一个绝佳的位置，而不仅仅是一个过道空间。

与当地土著代表的磋商确保了土著文化的影响将从小规模细节深入至具体元素，直至命名；从原生花园到底层都强调乡村的重要性。

向圣基尔达学习

Fitzroy街是墨尔本几条宽阔的步行长廊之一，拥有宽阔的路面和海湾景色。一些建筑有着柱廊贴近道路边缘建造的门廊和阳台；最

值得注意的是海景酒店、乔治酒店的和宴会厅和威尔士王子酒店，自20世纪70年代以来就是LGBTQI团体的大本营。Leo的意大利面酒吧以其巨大的流行外墙拼写着Leo，提醒着我们Fitzroy街是一个夜生活场所。

圣基尔达的地方精神在很大程度上取决于其连接的沙滩、海湾以及它作为一个娱乐地标的历史。圣基尔达的建筑和风景反应了这个独特的地方，充满了异国情调的繁荣和浪漫主义的空想，最显著的莫过于摩尔人的影响——穹顶、拱门、圆顶、圆屋顶和曲线形式，有趣又迷人。

作为一个半公共建筑，这个地标傲然坐落在Fitzroy街商业区内。在人行道上有一个带有露台的双层高的柱廊，为维多利亚骄傲中心提供了一个有利的位置，可以观看街道独特的日常活动和项目。

维多利亚骄傲中心包罗再抽象出这些圣基尔达传统。这种抽象可以进一步解释——从月神公园的超现实主义富丽秀到圣基尔达海滩的滚滚浪涛，从Inga King的“向前涌动”雕塑到Catani的海滩假山的角落，从滨海艺术中心的实用高效到标志性的Catani拱桥。

空间的清晰性

建筑的空间安排清晰可辨：循环从维多利亚骄傲中心椭圆形中庭辐射；每一层都是相关功能的清晰集合，通过椭圆形的中庭在视觉和空间上进行连接；结构和非结构性织物清晰地铰接在一起，进一步解释空间如何建造的，什么是永久的，什么是易变的；最后，一个配色方案分清了建筑的不同楼层并且拓展出了使用者在每个楼层的位置。

社团

该建筑具有强烈的身份，与Fitzroy街的商业建筑截然不同，但也尊重其背景。它延伸到Fitzroy街，模糊了室内和圣基尔达街头生活之间的界限，同时也为LGBTQI团体提供了一个安全的场所。商业街、维多利亚骄傲中心椭圆形

中庭、论坛、剧院电影院和屋顶设施是LGBTQI社团和一般社团建立亲密关系的独特空间。

成本高效

为确保财务可行性，该项目提供灵活的可出租商业空间。商业租赁店面正对Fitzroy街和Jackson街。屋顶包括可伸缩面料的拱顶、酒吧备餐室和大型活动的设施。四楼提供了一个备餐厨房。剧院电影院包括酒吧备餐室，使私人经营者能够同时备办私人活动和维多利亚骄傲中心的活动。

催化剂

建筑本身并不能确保某些活动的发生，但是，建筑绝对可以阻止一些活动的发生。维多利亚骄傲中心的设计采用上述策略来确保这个建筑是一种激励，而不是一个障碍。

拥抱差异

我们希望这座建筑将成为全国公认的墨尔本象征，颂扬LGBTQI社团的成果和澳大利亚文化的进步。

欢迎来到维多利亚骄傲中心。













CONCEPT DIAGRAM

设计概念



1. Maximum Building Envelope
1. 最大的建筑围护结构

—

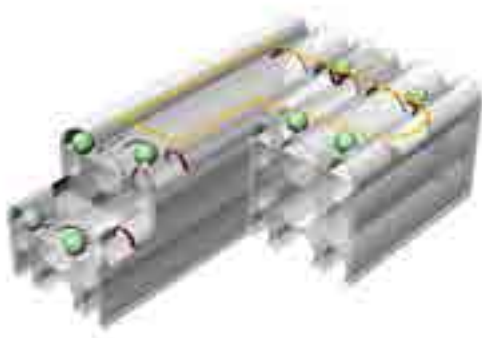


2. Conceptual Tubular Vaults
2. 概念管状拱顶

=



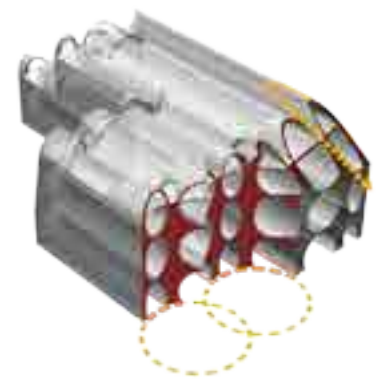
3. Shaping the Space: Subtracting of Conceptual Tubes
3. 塑造空间：概念管的减法



4. Shaping the Terrace:
Subtraction of Outdoor Terrace and Landscaping
4. 塑造露台：室外阳台和景观的减法



5. Shaping for the Future:
Creating Setbacks to the Adjacent Property
5. 塑造未来：在周边创造缩进



6. Being a Good Neighbour: Retaining Significant Existing Trees; Maximizing Solar Access and Reducing Perceived Scale to the Residential Interface
6. 做一个好邻居：保留重要的现有树木；最大限度地获取太阳能并减少住宅区对本项目的感知规模



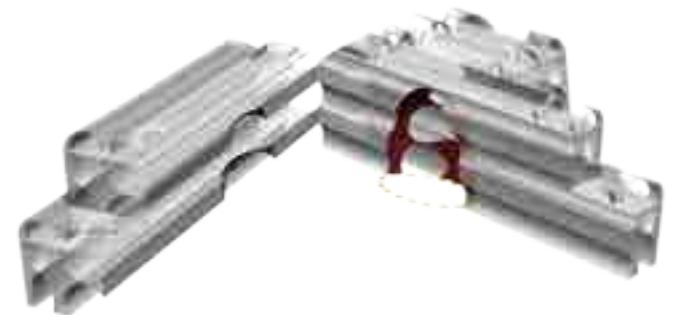
7. Shaped Spcae
7. 塑形后的空间

—



8. Large Scale Ellipsoid Atrium
8. 大型椭圆形中庭

=



9. Creating a Light Filled Central Gathering Square:
Subtracting of Ellipsoid Atrium
9. 创建一个光线充足的中心聚集广场：镂出椭圆形中庭



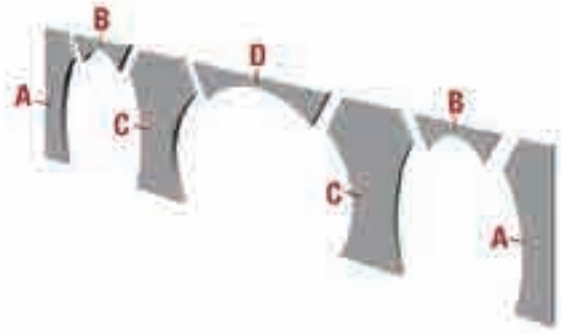
10. Subtracting the Ellipsoid Atrium from the Conceptual Tubes
10. 从概念管中镂出椭圆形中庭



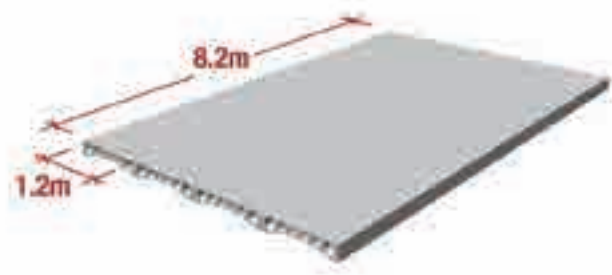
11. Resulting Atrium Space and Form
11. 形成后的中庭空间与结构

STRUCTURE DIAGRAM

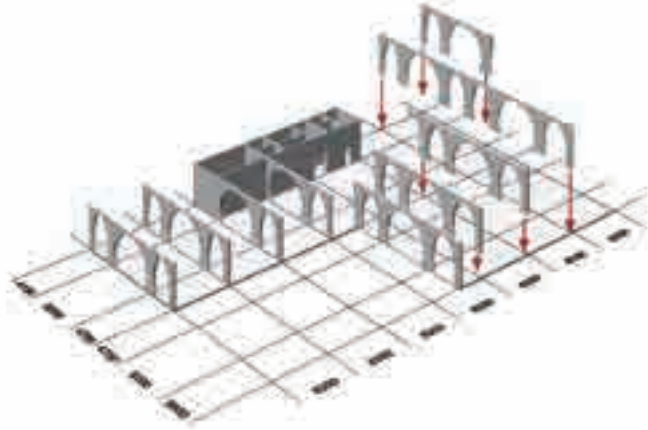
结构分析



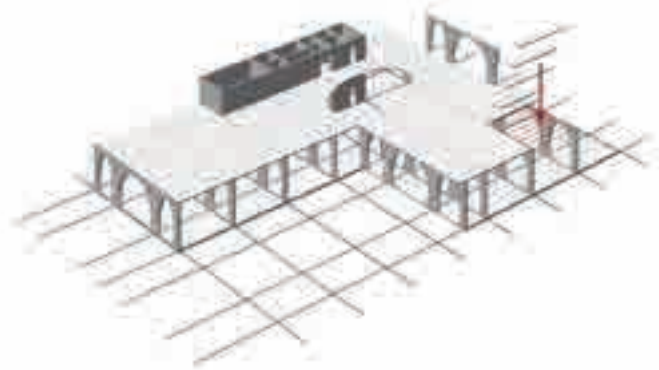
Standardized Precast Elements
标准化预制构件



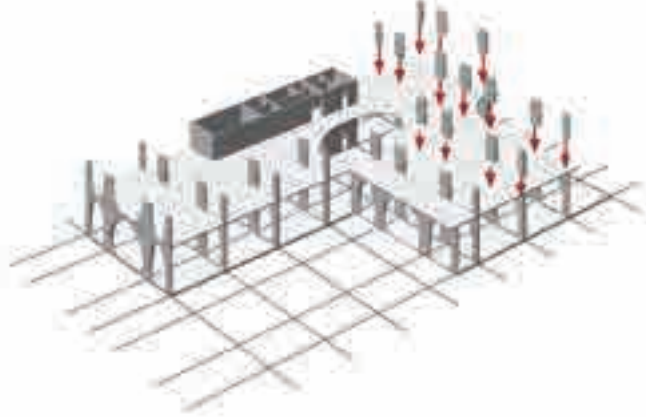
Standardized Hollowcore Slab, Exposed Ceilings
外露的标准中空楼板



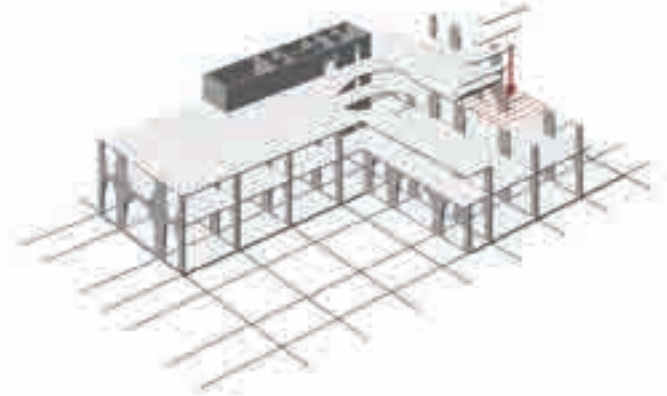
Precast Column Arches
预制拱形柱子



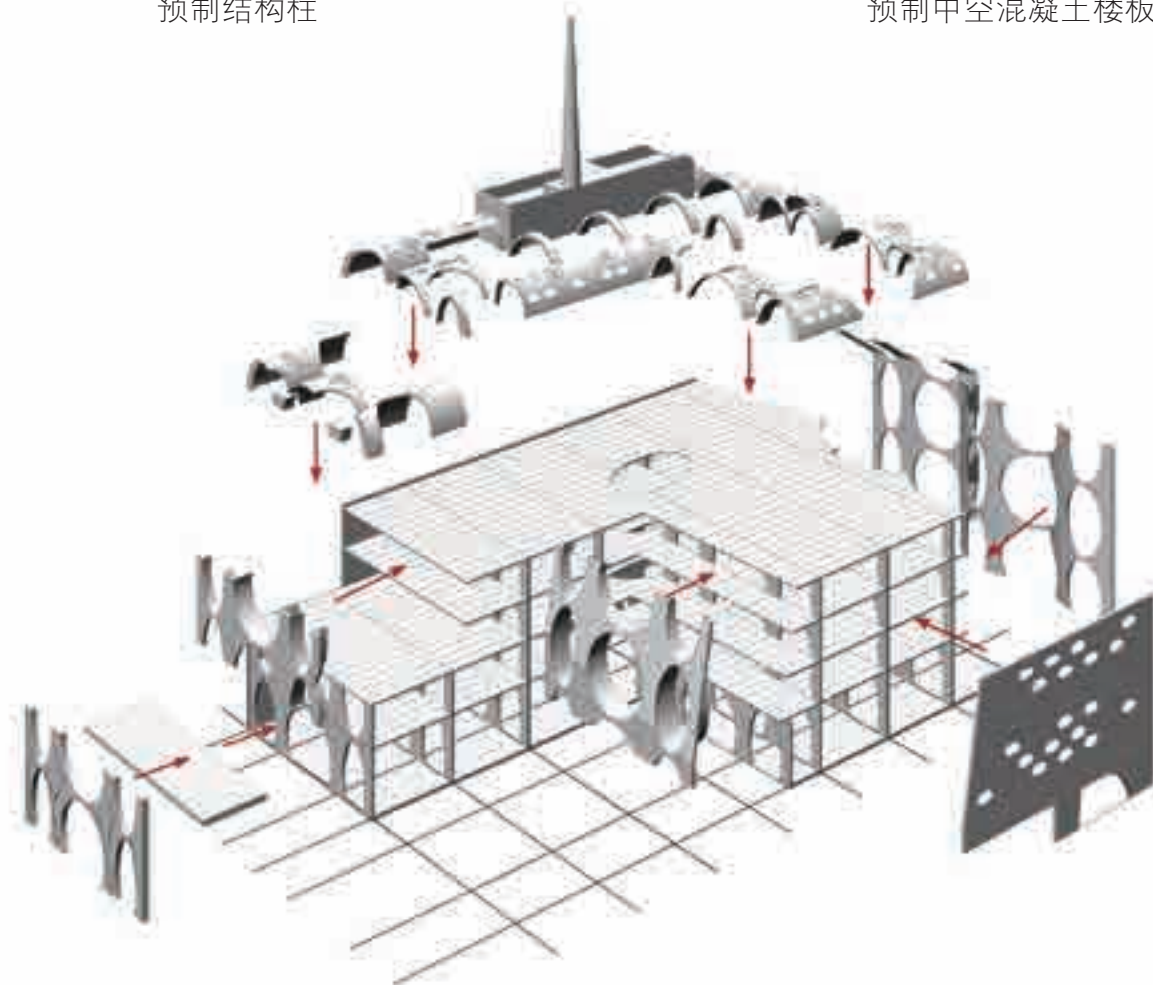
Prefab Hollowcore Concrete Planks
预制中空混凝土楼板



Precast Columns
预制结构柱



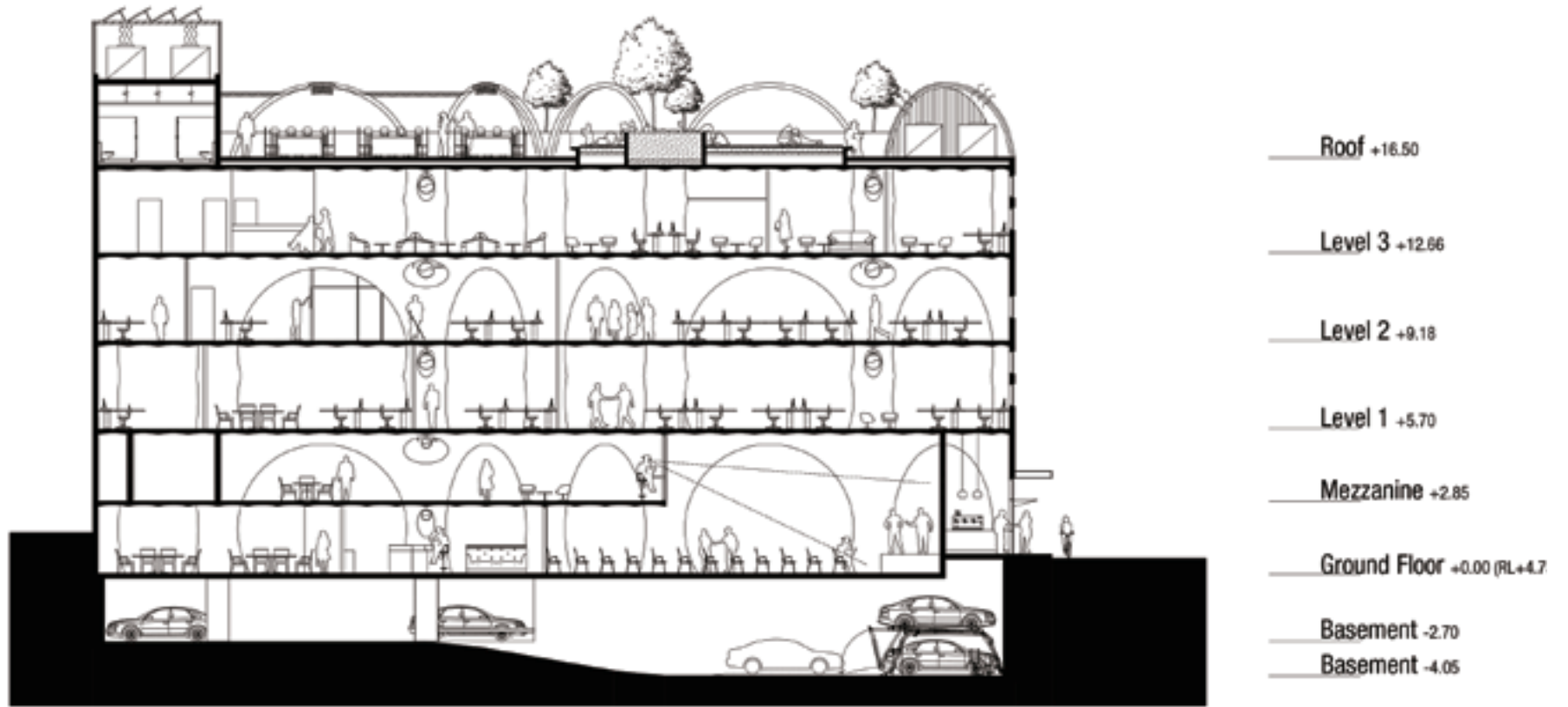
Prefab Hollowcore Concrete Planks
预制中空混凝土楼板

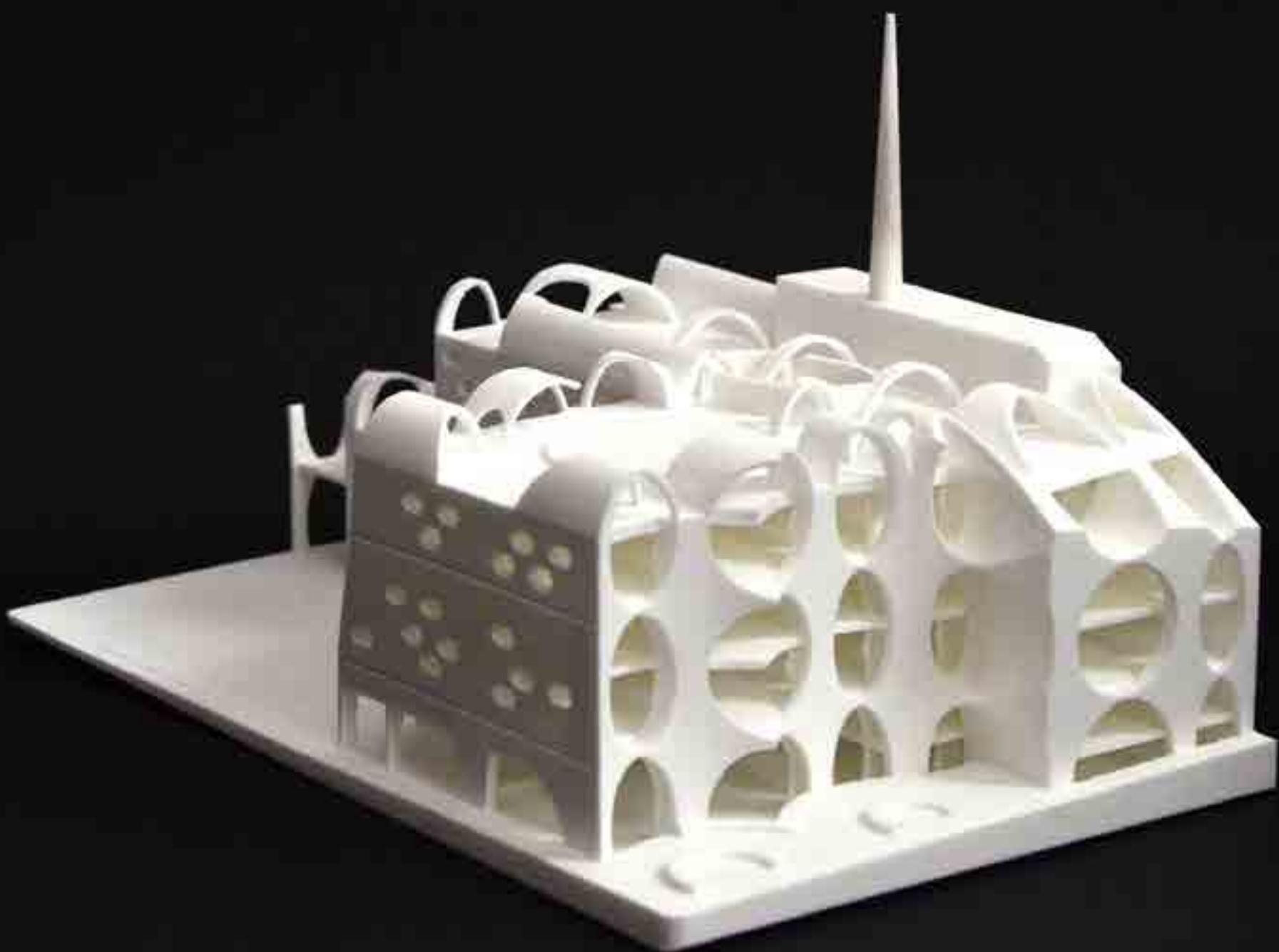
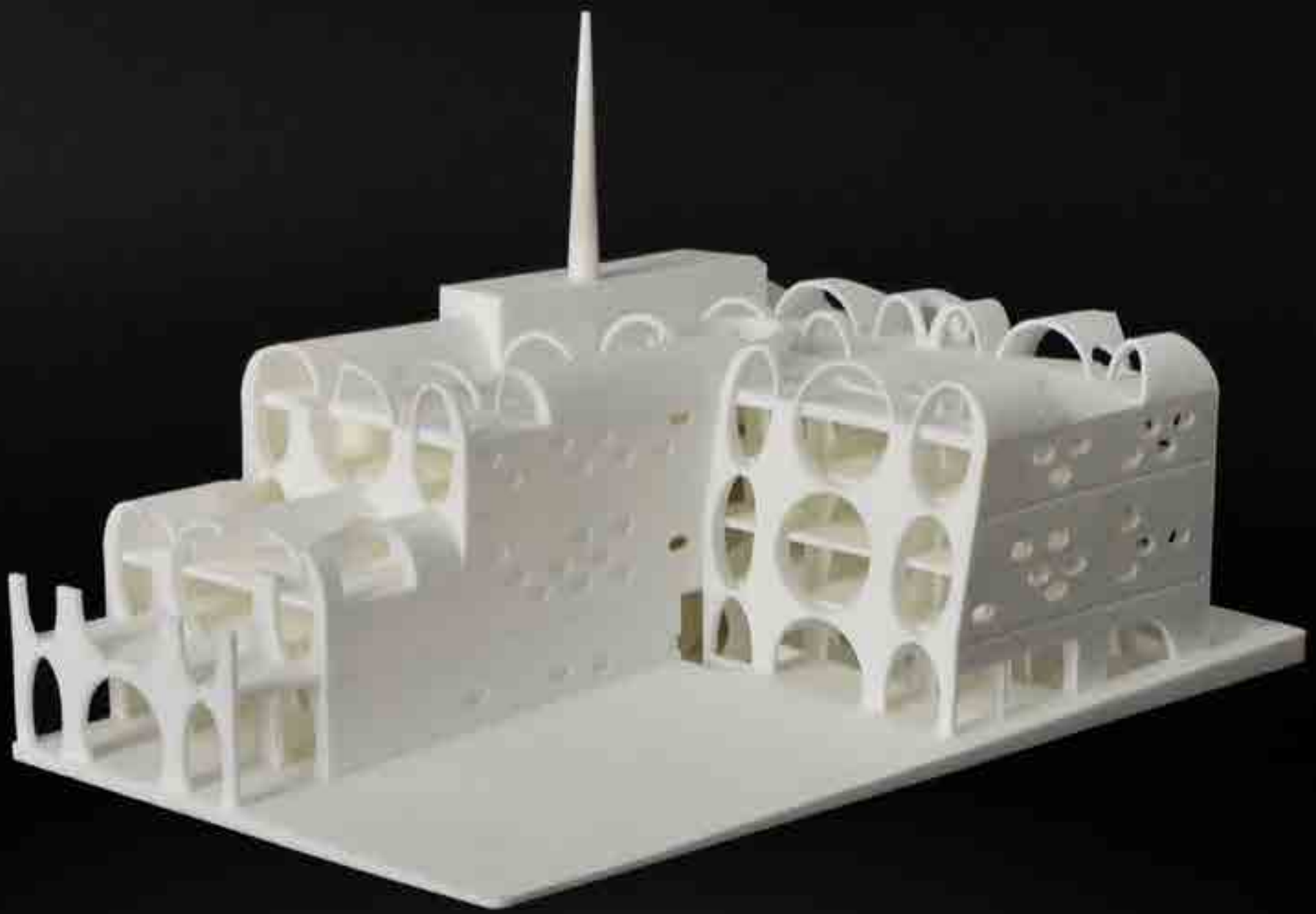


Precase Facade Elements
预制立面构件

BAU 003M

SECTION
剖面





GRANT AMON
ARCHITECTS

BAU Brearley Architects + Urbanists

CONTACT

pr@bau.com.au
www.bau.com.au

MELBOURNE

41 Acland Street
St Kilda 3182, Victoria
Australia
Telephone +61 (3) 9537 2551

SHANGHAI

8 Bao Qing Road,
Shanghai 200031,
China
徐汇区宝庆路8号 邮编 200031
Telephone +86 21 5466 6969